

Collection 2014/2015



spoing_{nl}



SPOINQ 001

INTRO

In 2011 our journey started. Searching for new ways to create a unique and most personal way for your living space. Ways that brought us to foreign countries, new clients abroad, exciting projects and also: new designers to work with. People all passionate about design, but even more by the environment they live in and also the people they share it with. Therefore they design with care for our environment using honest and pure materials. What we have, what we love, what we do and of course, what we introduce. That is what the new season is all about. With you in our mind, we worked on designs that fit your personal style. That is what we love as well: making people happy.

So enjoy! Our new collection with designs by Roderick Vos, Ruud-Jan Kokke, Ben Oostrum and Marc Th. van der Voorn will take you to another level of Dutch Design.

Live life, love Spoinq

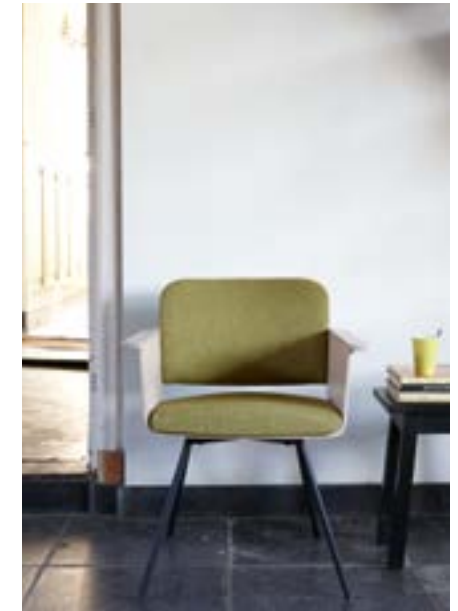


WHAT WE MAKE

We build. Build for the future, build a collection, but also build a relationship with our designers. Every year we create a new collection with selected Dutch designers which we are proud of.



Casco
by Gerard van de Berg



Beech
by BuroBas



Spoinq
by Ruud-Jan Kokke



Spranq
by Spoinq



Vintage square
by Ruud-Jan Kokke



Square
by Ruud-Jan Kokke



White edition
by Ruud-Jan Kokke



Twister
by Marc TH. van der Voorn



Stackable
by Ruud-Jan Kokke



Table Straight
by Ruud-Jan Kokke

WHAT WE INTRODUCE

Inspiration surrounds us and becomes a true source for new ideas. Our designers are aware of their surroundings and try to find new ways to be innovative. For this season we are proud to introduce new designs by a fresh as well as an established set of designers. Designs by Roderick Vos, Ruud-Jan Kokke, Marc Th. Van der Voorn and Ben Oostrum that will make your home personal and unique.





Blakeley 003
by Roderick Vos



Chair Jane
by Ruud-Jan Kokke



Table Jane
by Ruud-Jan Kokke



Table Deck
by Marc Th. van der Voorn



B-Happy
by Ben Oostrum



Blakeley 003
by Roderick Vos



Table Swan
by Marc Th. van der Voorn



Blakeley 001
by Roderick Vos



Blakeley 002
by Roderick Vos



Blakeley Bench 002
by Roderick Vos



Barstool
by Ruud-Jan Kokke

WE LOVE PROJECTS

We are able to think larger than only one living room. We like spaces that bring people together. Spaces that need to be functional, but stylish at the same time. Therefore, we love projects. More important: we know projects. We know what is important in public spaces and what aspects to take into account to create the perfect space for the end user. Combined with the right sense of style it is possible to make every space attractive and functional at the same time.





Verkade Fabriek
's Hertogenbosch



Driessen HRM
Helmond



Hotel Mas Lazuli
Pau, Spain



Verkade Fabriek
's Hertogenbosch



Driessen HRM
Hal 2, Eindhoven



WZH Oosterheem
Zoetermeer

WE WORK TOGETHER

Ruud-Jan Kokke



Celebrated Dutch designer, Ruud-Jan Kokke, designed the very first Spoinq collection. Chair Spoinq became the base for an entire collection by Ruud-Jan Kokke. Kokke typically seeks balance in his designs: "A project is only successful if an equilibrium is reached between material, form and use". Kokke works principally with wood and steel, testing these materials to the limit. He refuses to be tied to one environment. In his work he regularly collaborates with designers from other disciplines to create for schools, businesses, government buildings and public spaces. This diversity makes Kokke a flexible partner with extensive knowledge of the complexity of the development task. He sees himself as a builder, with a great knowledge and love of materials and construction techniques. Kokke has won several awards both nationally and internationally for his work. Several of his designs are already regarded as design classics and are included in the collections of the Municipal Museum in Amsterdam and the Museum of Modern Art (MOMA) in New York.

Gerard van den Berg (1947) is a Dutch designer who is both nationally and internationally recognized. Gerard found expression for his creativity at an early age and has been developing this ever since. His designs combine his creativity with his extensive knowledge of the furniture business, which he acquired from his father. "Even before making the outline of a model, in my head I have already tested all the technical possibilities and impossibilities. Model and technology are intertwined in my head. Then I start sketching." Gerard started his own furniture company in 1991 called Label. His designs are sold worldwide including the successful designs Hidde and Tiba. Gerard's designs are striking and simple and above all must be comfortable to sit on. He is inspired by nature and uses only the finest natural materials. For him, good design means thinking in pure, clean lines. Gerard van den Berg has won several awards, including the Kho Liang Price (1984), the Mobilia innovation award (1990), the price for Interior Decoration (1991) and the prize for best Dutch furniture design (1984 and 1997). Gerard has designed for other brands such as Montis and Designonstock.

Gerard van den Berg



Buro Bas



Burobas is curious, open-minded and involved. Bas Lamers, Bas van Rooij and their staff listen sharply to their clients. In the centre of Dutch design, Eindhoven, they work on design solutions that work for the end users. They consider this as their strength since it is always about the people who use their furniture. Burobas searches for the dialogue with the user which leads to insights that had never arise during the drawing process. Burobas designs interiors for residential care buildings, small scale residential facilities for pg-residents, schools, offices and furniture. Informal interiors where people come together and stimulates them to explore their talents.

Marc Th. van der Voorn



Marc Th. van der Voorn is a Dutch designer based in Utrecht, working in the field of product design. His approach is practical, hands on and collaborative. Self-initiated projects serve to experiment with materials and to challenge production processes to find, frequently, their way into commercial projects. His experience in design, product development and practical know-how make him a dedicated partner. His aim is to develop consumer products in collaboration with committed manufactures and brands. "Getting to know my clients is crucial in the design process. An intensive exchange of knowledge is a must. A team effect is needed to create a remarkable product that stands out". Many of Marc's design have found their way to customers around the world and have been published in international magazines and trend bibles. He gives guest lectures on Art schools, inspiring and coaching next generation designers. As a co-editor he writes for several blogs and magazines. "It is my goal to inspire others", tells Van der Voorn.

Ben Oostrum



Ben Oostrum lives and works in Rotterdam. The city which breathes new designs and new ideas. His point of view: "All the world needs is good design." As a designer at his own bureau, Boo, he focuses on product and interior design. Several products such as lighting, furniture and home accessories are not strange for Ben. As a designer he is known for his Bricks, Tiles and a Jenever Bottle. Amongst other things he is best known for the Crosslight, a lamp he designed in cooperation with Jan Melis for the Belgium Lighting Company DARK.

Ben Oostrum worked for both private costumers and companies like DARK, IdFrm, XALA, Spoinq, Havensteder, JB Lorenz, Canock Chase, Pol's Potten, Goedewaagen, Onder de Boompjes, and more.

Roderick Vos



Roderick Vos (Groningen, The Netherlands, 1965) started his studies in Industrial Design at Eindhoven's "Design Academy" in 1984. In 1987, he moved to Japan for 8 months, where he found an excellent tutor at GK Industrial Associates/Tokyo, founded by Kenji Ekuon. In 1987, he worked as a trainee for 4 months at Studio Ingo Maurer in Munich. Roderick Vos being partly Asian himself, this particular period evidently had a large impact on his personal interest in Asian Culture and its works. In 1990, he graduated from the "Design Academy" (Men & Living division), and started working with his partner Claire Vos Teeuwen (Tegelen, 1965), an industrial designer too. Together they created the design office and showroom 'Studio Roderick Vos' based in 's-Hertogenbosch, the Netherlands. Several of his works were acquired by prestigious museums, such as Stedelijk Amsterdam and Design & Arts Museum NY.

WE LET YOU CHOOSE

Designing a product is the first step to a unique piece of furniture. But we believe that the best products are made together with you. So let's get started! You can choose out of a wide range of fabrics, leather, wood and colored steel to create your own personal design. We update our collection of fabrics every year so take a look at our website or at our selected dealers to see what is trendy now. And to make it personal; feel free to ask us to send samples of the fabric and let us know how we can help to make your piece one of a kind.





Spoinq Square
/ Ruud-Jan Kokke

Height (seat): 48 cm
Width: 44 cm
Depth: 42 cm
Total height: 85,5 cm

SPQSS steel legs



Spoinq armrests
/ Ruud-Jan Kokke

Height (seat): 48 cm
Width: 44 cm
Depth: 42 cm
Total height: 85,5 cm
Height armrests: 68 cm

SPQSHA oak natural legs + armrests oak natural



SPQSH teak legs



SPQSH oak natural legs



SPQSH oak white legs



SPQSH oak dark legs



SPQSS steel legs powder-coated black/ white



SPQSHA armrests oak dark



SPQSHA armrests oak white



SPQSHA teak armrests



Spoinq Piramide
/ Ruud-Jan Kokke

Height (seat): 48 cm
Width: 44 cm
Depth: 42 cm
Total height: 85,5 cm

SPQ PS steel legs



Spoinq stacking chair
/ Ruud-Jan Kokke

Height (seat): 48 cm
Width: 51,5 cm
Depth: 42 cm
Total height: 85,5 cm

SPQSK



SPQPH teak legs



SPQPH oak natural legs



SPQPH oak white legs



SPQPH oak dark legs



SPQSK stackable and connectable





Chair Button
/ Ruud-Jan Kokke

Height (seat): 48 cm
Width: 44 cm
Depth: 42 cm
Total height: 85,5 cm

Button is soft and abundant and can be matched with all type of legs.

SPQ BSS steel legs



SPQ BSH



Chair wooden seat
/ Ruud-Jan Kokke

Height (seat): 47 cm
Width: 44 cm
Depth: 42 cm
Total height: 85,5 cm

Chair Spoinq wooden seat can be matched with all type of legs.

SPQ SH oak natural



SPQ SH oak white



SPQ SH oak dark



SPQB high back

Spoinq Barstool Piramide High
/ Ruud-Jan Kokke

Height (seat): 75 cm
Width: 43,5 cm
Depth: 40 cm
Total height: 89,5 cm

Barstool Piramide Low
/ Ruud-Jan Kokke

Height (seat): 65 cm
Width: 43,5 cm
Depth: 40 cm
Total height: 89,5 cm



SPQB 165



SPQB 165



SPQB low back



SPQRZH steel powdercoated black, back natural oak

Chair Spranq
/ Spoinq designteam

Height (seat): 46 cm
Width: 42 cm
Depth: 42 cm
Total height: 83 cm



SPQRBH steel natural coated, back oak dark



Chair Beech
/ BuroBas

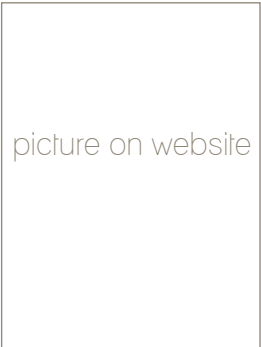
Height (seat): 47 cm
Width: 63 cm
Depth: 43 cm
Total height: 78 cm
Height arm rests: 64 cm

Legs in black coated steel, armrests massive oak.
Veneer seating available in oak natural, oak white,
oak dark. Upholstery : several fabrics and leather.

SPQHBL oak dark



SPQHBL oak white



SPQHBL oak Natural

picture on website



Diningchair Casco
/ Gerard van den Berg

Height (seat): 47 cm
Width: 57 cm
Depth: 57 cm
Total height: 80,5 cm
Height armrests: 64,5 cm

Steel frame available in natural coated steel or
powdercoated black steel.

ECHZ



ECHB



Fauteuil Casco
/ Gerard van den Berg

Height (seat): 41,5 cm
Width: 69,5 cm
Depth: 83,5 cm
Total height: 95,5 cm
Height armrests: 58,5 cm

Steel frame available in natural coated steel or
powdercoated black steel.

FCZ



FCB



Chair Phill
/ Ruud-Jan Kokke

Height (seat): 46 cm
Width: 42 cm
Depth: 42 cm
Total height: 83 cm

SPQHHP with armrests



SPQHHP



SPQHHP



SPQHHP



SPQHHP



SPQHHP



Chair Jane
/ Ruud-Jan Kokke

Height (seat): 47 cm
Width: 59 cm
Depth: 44 cm
Total height: 83 cm
Height armrest: 68 cm

JSA powdercoated frame and armrests, upholstered seat



JS powdercoated frame and upholstered seat



Fauteuil Jane
/ Ruud-Jan Kokke

Coming soon!

JF



Chair B-Happy
/ Ben Oostrum

Height (seat): 47 cm
Width: 46-48 cm
Depth: 38 cm
Total height: 83 cm

BHH natural oak solid legs, veneer seat



BHS natural solid oak legs, upholstered seat



BHI natural oak solid legs, veneer seat, upholstered pad



SPQH teak top

Table Straight / Ruud-Jan Kokke steel legs

Available in: 180 x 100 x 75
200 x 100 x 75
220 x 100 x 75
250 x 100 x 75



JT, powdercoated steel. solid oak top

Table Jane / Ruud-Jan Kokke

Available in: 180 x 100 x 75
200 x 100 x 75
220 x 100 x 75
250 x 100 x 75



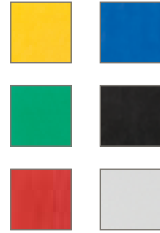
SPQH oak top



SPQH walnut top



SPQH PE top



SPQH teak legs teak top

Table Straight / Ruud-Jan Kokke wooden legs

Available in: 180 x 100 x 75
200 x 100 x 75
220 x 100 x 75
250 x 100 x 75



SW natural oak

Table Swan / Marc Th. van der Voorn

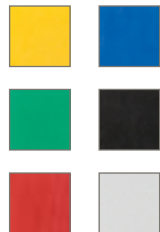
Available in: 200 x 95 x 75
240 x 100 x 75
300 x 100 x 75



SPQH oak legs oak top



SPQH teak legs PE top





BT1 powdercoated steel, solid Ash wood.

Table Blakely 001 / Roderick Vos

Available in: 200 x 100 x 76
225 x 100 x 76
250 x 100 x 76

Available in all RAL colours of steel, samples at your request.
Also available in solid oak and walnut.



BT3 powdercoated steel, solid Ash wood

Table Blakely 003 / Roderick Vos

Available in: 200 x 100 x 76
225 x 100 x 76
250 x 100 x 76

Available in all RAL colours of steel, samples at your request.



BT2 powdercoated steel, solid oak (more colors available)

Table Blakely 002 / Roderick Vos

Available in: 200 x 100 x 76
225 x 100 x 76
250 x 100 x 76

Available in all RAL colours of steel, samples at your request.



BT3 powdercoated steel, solid oak (more colors available)



BT2 powdercoated steel, solid oak (more colors available)



BB2 powdercoated steel, solid oak
(more colors available)

Bench Blakely / Roderick Vos

Available in: 200 x 45 x 48
225 x 45 x 48
250 x 45 x 48

Available in all RAL colours of steel, samples at your request.



BB1
powdercoated steel, solid oak (more
colors available)



BB3 powdercoated steel, solid oak (more
colors available)

NB The Blakeley collection is available in solid oak, ash wood and walnut



Table Rang
/ Ruud-Jan Kokke

Available in: 80 x 80 x 76

RQTH available in oak and teak



TWBH varnished steel, top oak veneer



TWZH powdercoated black steel, top oak veneer

Coffee Table Twister
/ Marc Th. van der Voorn

Available in: Ø 50 x 56
Ø 70 x 41



Table Twister
/ Marc Th. van der Voorn

Available in: Ø 130 x 76
Also available in steel

TWZH 130 powdercoated black steel, top oak veneer



Coffee table Deck
/ Marc Th. van der Voorn

Available in: Ø 75 x 35

DC powdercoated steel, solid oak



THANKS!

Production by
Team Spoinq
www.spoinq.nl

Photography by
Simone de Geus
www.sirkelfotografie.com

Styling by
Maya Burghouts
www.mayaburghouts-styling.com

Copy by
Eveliëne de Geus
ik@eveliëne.nl

Location at www.roderickvos.nl

Ceramics by
Olga Pullens
www.still-olga.nl

Kavel 84
www.kavel84.nl

Out of the Blue Conceptstore
www.shopoutoftheblue.com

Hal2
www.hal-2.nl



Spoing
+31 (0)416 315828

Dwarsweg 18
5165NM Waspik (NL)

info@spoing.nl
www.spoing.nl

spoing_{nl}

